



Barnet Community Innovation Fund Launch



- Adoption of NHS England 'Placed-based' approach to reducing health inequalities and strengthening community resilience;
- Building stronger relationships between the Voluntary and Community Sector (VCS), NHS and Local Authorities is a national priority and part of the NHS Long Term Plan;
- Impact of COVID and increasing demand on funds across the community sector, coupled with a reduction in local authority and NHS commissioners' budgets has highlighted that the sustainability of the VCS is at risk;
- Supporting innovation and creativity, and the coproduction of new initiatives and services delivered by the VCS needs to be a priority if the health and wellbeing of residents is to be improved and demand for statutory services reduced;
- Maximising a very strong community and voluntary sector in Barnet, where there is a good record of volunteering, community orientated social action and resident groups and a strong and thriving faith sector and ensure this invaluable resource is equally accessible and representative of all diverse communities in Barnet;
- Building on the momentum of the partnership work between the council and Barnet Together during the COVID 19 pandemic that supported the delivery of a programme of community-based activity to support residents alongside a wealth of VCS and faith partners, volunteers and resident groups.



- Partnership fund to support the development of new, innovative, community-based projects with a focus on Health and Adult Social Care and Equalities based initiatives and to support disproportionately affected BAME groups;
- Complements what we already have in place, supports the focus in the NHS Long Term Plan on prevention, addressing health inequalities and the role communities can play, is linked to the borough's population needs and the ICP shared objectives aimed at improving health and wellbeing outcomes through Start Well, Live Well, Age Well.
- Prevention a core theme and central to a vision of a place-based approach for Barnet, which supports the delivery of evidence-based interventions that improve outcomes for residents and reduces demand and future spending on Health and Social Care;
- Support initiatives that enable VCS collaboration with each other, social prescribing link workers and community referrals, such as the prevention and wellbeing co-ordination model initiatives and Barnet Federated GPs in partnership with Primary Care Networks and the Council to ensure links with personalised and preventative care in Barnet;
- Work alongside the council's VCS infrastructure contract to proactively support VCS to identify sources of funding, training and networking opportunities.



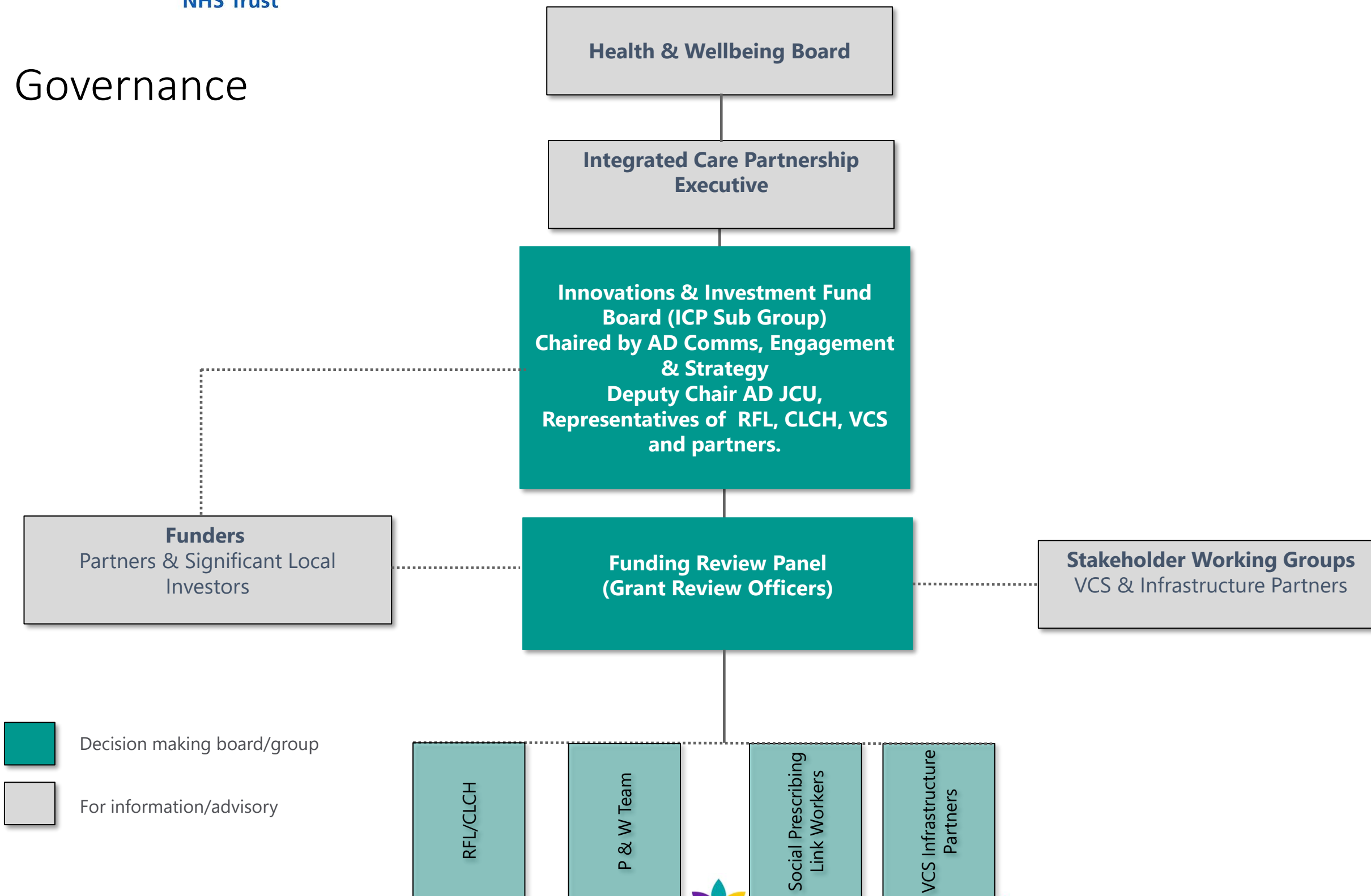
Our Priorities

Immediate objectives

- Early Intervention & Prevention
- Understand where the gaps are in interventions to 'prescribe' and support VCS to develop and grow those initiatives;
- Supporting the development of a stronger, more resilient and sustainable community partnership
- Increasing community-based projects and initiatives to better serve residents
- Supporting the voluntary sector to grow, develop and sustain



Governance



Funding Principles

The Fund can support community groups and projects across Barnet through three levels of investments:

- Money is given as an investment rather than a grant, and the expectation is that projects should be self-sustaining after a set period;
- Monitoring of organisations receiving money from the fund to be, based on the concern that placing onerous requirements on recipients would strangle innovation and prove counterproductive;
- Monitoring is to be based on the high-level goals that will be achieved for local people and communities. Goals should be linked to Barnet's Social Prescribing emerging Outcomes Framework;
- VCS would be supported by statutory/infrastructure partners to help them develop their services and scale them up where appropriate
- VCS encouraged and supported to look for match funding and apply for external funding opportunities.



First Wave Funding Initiatives

- **Respite for carers**; one of the groups who have been most impacted during the pandemic
- **Digital inclusion projects for older people**; to help get them connected during prolonged periods of lockdown and/or social distancing/shielding
- **People who have lost or at risk of losing their jobs.**
- **Mitigating risk of lost functionality and mobility in older people**



- Applicants will be encouraged to submit evidence based proposals, where possible.
- Applications will be evaluated against the following criteria and funds distributed against an agreed set of aims.

Applications will be evaluated against the following criteria:

- Based on the needs of the population, particularly vulnerable adults
- Aligns with current local policies, strategies or objectives
- Compliments what is already in place
- Intends to improve health and wellbeing outcomes of the local population
- Impact on the residents of Barnet and benefits to the local community
- Prevents, reduces or delays demand on statutory and other public sector services
- Foster coproduction and partnership – around funding that aims to enable collaboration with others or indeed better pathways of support for residents between organisations

In addition, funds will be distributed in a way that aims to:

- Be inclusive, taking account of the diversity of the sector and our borough
- Meet the needs of our most vulnerable residents
- Supports projects that maximise opportunities for innovation
- Address and/or acknowledge identified gaps in services and support for hard to reach and engage with residents



High Level and Long-term Outcomes

Impact on the health and care system

- Health promotion and prevention averting deterioration and crisis
- Broader range of 'social prescriptions' to support people in the community
- More people to get into work to improve their mental health
- Delaying entry and reducing demand to social care

Impact on the community

- Stronger, resilient and sustainable community and voluntary sector
- Increase in community-based projects and initiatives available to residents
- Improved relationship and collaboration between VCS, NHS and LBB

Impact on individuals/residents

- Improved mental health and wellbeing
- Improved social connections and reduction in loneliness
- Increased access to local community provisions
- Improved independence



Delivery Model

- Fund managed by a dedicated Council resource, supported by colleagues from Finance, Community Participation, Insight and Intelligence, infrastructure partners and Barnet Together;
- Proactive identification of service needs/gaps in provision, joining need with funding opportunities, informed by social prescribers, insight, best practice and engagement with residents, stakeholders and the sector;
- Grants awarded by dedicated Grants Panel overseen by the ICP sub-group with panel members from across the funding organisations inc. council, RFL, CLCH, VCS and funders, where appropriate;
- Working collaboratively with established community partners to further support the VCS; and
- Direct engagement with council services and VCS organisations in the borough to determine priorities for the first round of funding, identify opportunities for future funding, growth and expansion and gaps in support.



Working Together for the greater good.

- **We asked** – that the Council sign up to the Sector Manifesto.
- **They Listened**
- **They did** – In June, the Council signed up to the Sector Manifesto and have encouraged wider stakeholders to follow suit.

<https://www.youngbarnetfoundation.org.uk/manifesto>



Banding Discussions

The initial funding pot will be c.£150,000 and can support community groups and projects across Barnet through three levels of investments. Suggested bandings:

- Band 1: Small investment (up to £2,000) – (e.g. a pilot)
- Band 2: Start-up investment (up to 10,000) – (e.g. an opportunity to put an idea into practice)
- Band 3: Big idea investment (up to £65,000) – (e.g. an initiative offering greater impact over longer timeframe, on working with a number of partners if possible)

The panel anticipate awarding at least one bid in Band 3, however, the panel will take a flexible approach if multiple band 3 bids are prioritised for investment.



Monitoring and Evaluation Discussions

What does that look like? Proposals from colleagues included:

- Proportionate to size of investment; interim reporting and at end of project
- Soft and hard outcomes
- Not administratively onerous; low level of bureaucracy yet still ensures accountability
- Depending on grant size, mix of quantitative and qualitative; data and a case study
- Shareable and transparent at the end of the project; lessons learnt shared in interactive forum to help to build relationships and networks

Next Steps – a focus group of VCS colleagues to agree approach supported by council



Next Steps

- Your feedback on the proposal – deadline 2nd February
- Proposed first funding round to commence on 16th February with 2 week application window
- Grant Panel to review bids on 16th March
- Grants awarded week beginning 22nd March
- Monitoring and evaluation focus group to agree approach, supported by Barnet Together / Council partners



Future funding

- The council is committed to developing long-term solutions with the VCS. Initiatives unsuccessful in the first funding round that meet other council or ICP funding requirements now or in the future will be invited for a further discussion.



What do you need to help you with this opportunity?

- More Support?
 - Additional bid writing support?
 - Project development support?
- Opportunity to submit a short expression of interest doc – to float/pitch your ideas?
- Better Data to support your application?
- Other?