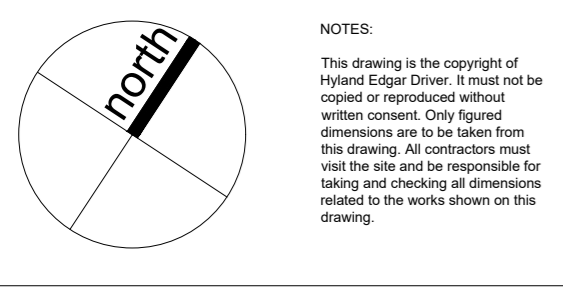


20 Jun 2021 - 2:51pm W:\1140 Royal Brunswick Park\CAD\Drawings\DETAIL PLANNING\ANS-1140-RBP-P1-001.dwg



NOTES:
This drawing is the copyright of Hyland Edgar Driver. It must not be copied or reproduced without written consent. Only figures and dimensions are to be taken from this drawing. All contractors must visit the site and be responsible for taking and checking all dimensions related to the works shown on this drawing.

SAFETY, HEALTH AND ENVIRONMENT INFORMATION
Unusual residual hazards/risks, based on experience and contractor working to approved method statements.

REVISIONS	DATE

REVISIONS	DATE
00 Issue for Planning	28.06.21

DATE: 28.06.21
DRAWING STATUS: PLANNING
PROJECT: Royal Brunswick Park
DRAWING TITLE: PHASE 01 Landscape: General Arrangement
DRAWING NUMBER: HED-1140-RBP-P1-1001

DRAWN BY: JSW
CHECKED BY: DC
SCALE: @A1(A3) 1:500

CLIENT: Comer Group

H E D Hyland Edgar Driver
Landscape Architects & Urban Designers
London & Winchester

Waterloo Court 10 Thread Street London SE1 8ST
One Wessex Way Colden Common Winchester SO21 1WG

T: 020 7803 9636
F: 01962 711 600